

# MONTHLY MEMBERSHIP PROGRESS REPORT

LOCATION TEXAS

District 2 T2

Results as of: 11/30/2022

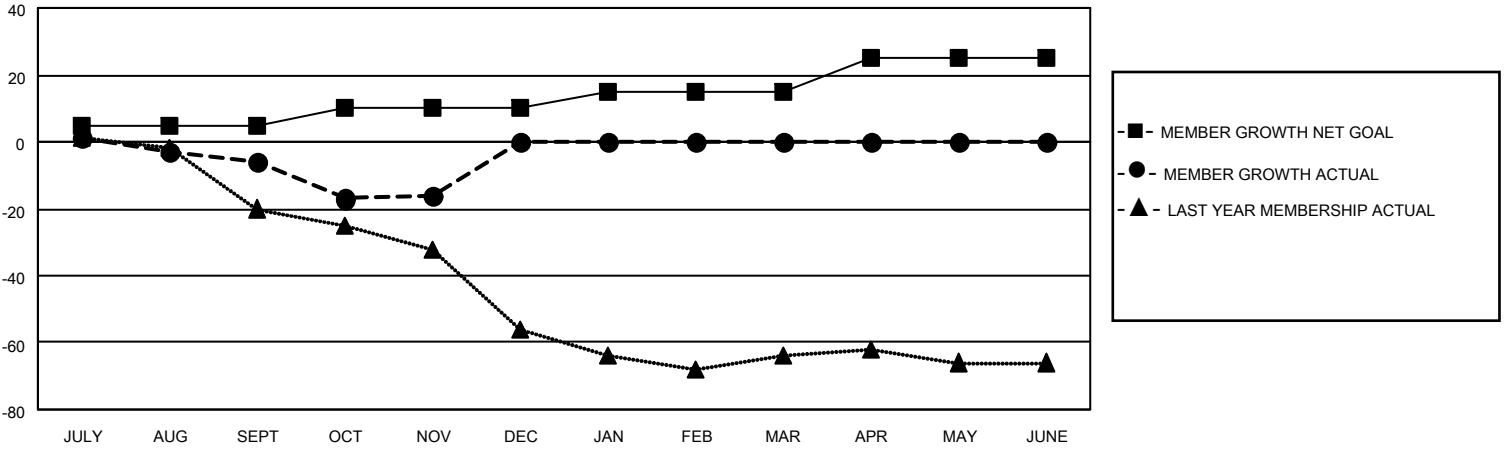
Clubs			
RESULTS FOR 2022-2023			
QUARTER	NEW CLUB GOAL	NEW CLUBS	DROPPED CLUBS
JULY/AUG/SEPT	0	0	0
OCT/NOV/DEC	0	0	0
JAN/FEB/MAR	0	0	0
APR/MAY/JUNE	1	0	0

Members			
RESULTS FOR 2022-2023			
QUARTER	MEMBER GROWTH NET GOAL	MEMBER GROWTH ACTUAL	DROPPED MEMBERS ACTUAL (including transfers)
JULY/AUG/SEPT	5	27	31
OCT/NOV/DEC	5	14	22
JAN/FEB/MAR	5	0	0
APR/MAY/JUNE	10	0	0

**GOALS AND ACTUAL NEW CLUBS CUMULATIVE**



**GOALS AND ACTUAL MEMBERS CUMULATIVE**



DROPPED CLUBS: 0	
<b>DROPPED MEMBERS</b>	
DECEASED	2
CLUB CANCELLED	0
OTHER	51
<b>TOTAL</b>	<b>53</b>

13 CLUBS OF 35 ADDED 1 OR MORE NEW MEMBERS

[CLICK HERE FOR CUMULATIVE MEMBERSHIP DATA](#)

<u>GENDER DISTRIBUTION</u>	
MALE	741 (72.01%)
FEMALE	287 (27.89%)
NON BINARY	0 (0.00%)
PREFER NOT TO ANSWER	1 (0.10%)
TOTAL FAMILY UNIT MEMBERS	
	97
FAMILY MEMBERS PAYING HALF DUES	
	49